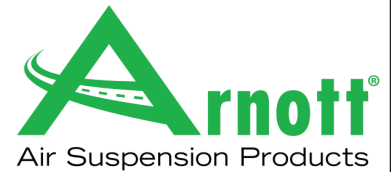


Installation Manual

P-2645

**AMK OES AIR SUSPENSION COMPRESSOR
FOR 2005-2009 LAND ROVER DISCOVERY (LR3)
FOR 2010-2013 LAND ROVER DISCOVERY (LR4)
FOR 2005-2013 LAND ROVER RANGE ROVER SPORT**



Congratulations on your purchase of an Arnett® air suspension product. We at Arnett Incorporated are proud to offer a high quality product at the industry's most competitive pricing. Thank you for your confidence in us and our product.

Proper installation is essential to experience and appreciate the benefits of this system. Please take a moment to review these installation instructions before you begin to install these components on your vehicle. The removal and installation of air suspension products should only be performed by a fully qualified, ASE Certified, professional.

It is equally important to be aware of all necessary safety measures while installing your new Air Suspension System. This includes proper lifting and immobilizing of the vehicle and isolation of any stored energy to prevent personal injury or property damage.

"Engineered to Ride, Built to Last®"



WARNING: *The air suspension system is under pressure (up to 10 bar, or 150 lbf/in). Verify pressure has been relieved and disconnect power to the air suspension system prior to disassembly. Do not allow dirt or grease to enter the system. Always wear standard hand, ear, and eye protection when servicing the air suspension system.*

Arnett® is committed to the quality of its products. If you have a question or problem with any Arnett product, please contact Arnett by calling **800-251-8993** during normal business hours or email techassistance@arnottinc.com. (In the EU please call +31 (0)73 7850 580 or email info@arnotteurope.com)

GENERAL INFORMATION:

Reading this manual signifies your agreement to the terms of the general release, waiver of liability, and hold harmless agreement, the full text of which is available at www.arnottinc.com.

- Not to be stored below 5°F (-15°C) or above 122°F (50°C).
- Avoid damage to air lines and cables.
- Removal and installation is only to be performed by fully qualified personnel.
- Use car manufacturer's diagnostic software.

CAUTION: Damage to the vehicle and air suspension system can be incurred if work is carried out in a manner other than specified in the instructions or in a different sequence.



To avoid the possibility of short circuits while working with electric components consult your owner's manual on how to disconnect your battery.



Consult your vehicle owner's manual, service manual, or car dealer for the correct jacking points on your vehicle and for additional care, safety and maintenance instructions. Under no circumstances should any work be completed underneath the vehicle if it is not adequately supported, as serious injuries and death can occur.



IF REPLACING A HITACHI[®] AIR SUSPENSION COMPRESSOR WITH THE AMK UNIT PURCHASED AT ARNOTT, THE VEHICLE **MUST** BE RE-PROGRAMMED WITH AMK SOFTWARE BY YOUR LAND ROVER DEALER. NEGLECTING TO DO SO CAN RESULT IN COMPRESSOR FAILURE AND VOID WARRANTY.

AIR SUSPENSION COMPRESSOR REMOVAL

1. Open the hood and locate the fuse box/battery cover. (FIGURE 10-1)



FIGURE 10-1

2. Remove the fuse box covers and air suspension compressor relay. (FIGURES 10-2, 10-3, 10-4)



FIGURE 10-2



FIGURE 10-3



FIGURE 10-4

3. Set steering to straight.
4. Raise vehicle.
5. Remove rear left wheel to access the air suspension compressor. (FIGURE 10-5)



FIGURE 10-5

6. Locate and remove the three (3) bolts holding the compressor cover to the vehicle. (FIGURES 10-6, 10-7, 10-8)



FIGURE 10-6



FIGURE 10-7



FIGURE 10-8

7. Separate the five (5) clips and remove the cover to expose the air suspension compressor. (FIGURES 10-9, 10-10)



FIGURE 10-9



FIGURE 10-10

8. Disconnect the two (2) electrical plugs from the vehicle to the compressor. (FIGURES 10-11, 10-12)

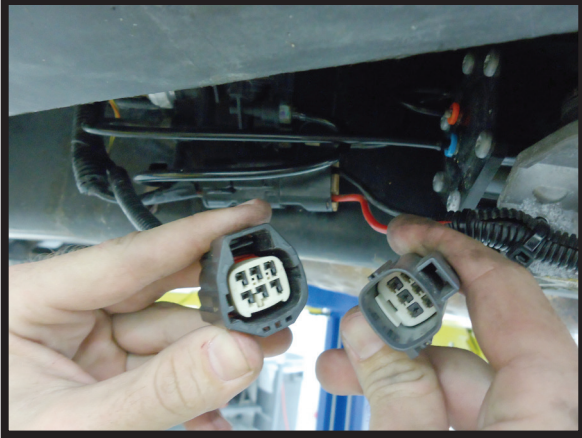


FIGURE 10-11

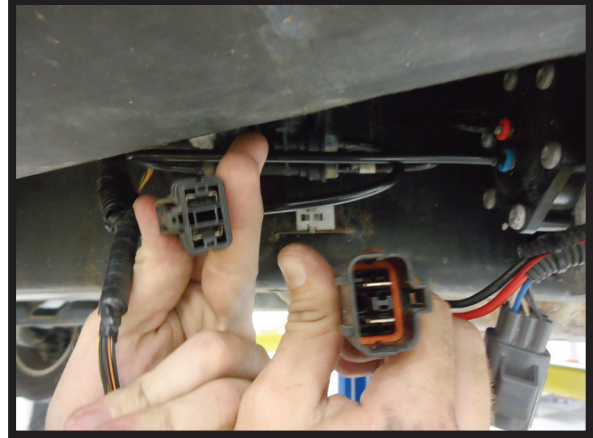


FIGURE 10-12

9. Remove the air hose at the front of the compressor by pushing in the quick connect fitting and pulling out the air hose. (FIGURE 10-13)



FIGURE 10-13

10. Remove the two (2) air hoses at the back of the compressor by pushing in the quick connect fittings and pulling out the air hoses. (FIGURE 10-14)



FIGURE 10-14

11. Locate and remove the three (3) bolts holding the compressor/bracket assembly to the vehicle. Save these bolts for re-installation. (FIGURES 10-15, 10-16, 10-17)



FIGURE 10-15



FIGURE 10-16

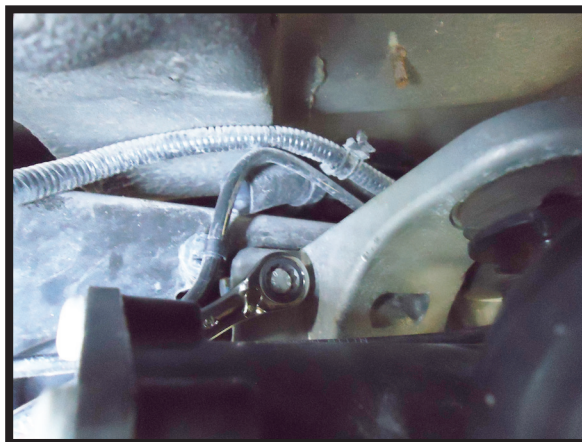


FIGURE 10-17

12. Remove the compressor/bracket assembly from the vehicle. (FIGURE 10-18)



FIGURE 10-18

13. Remove the "J" shaped hose from the distribution block. (FIGURE 10-19)

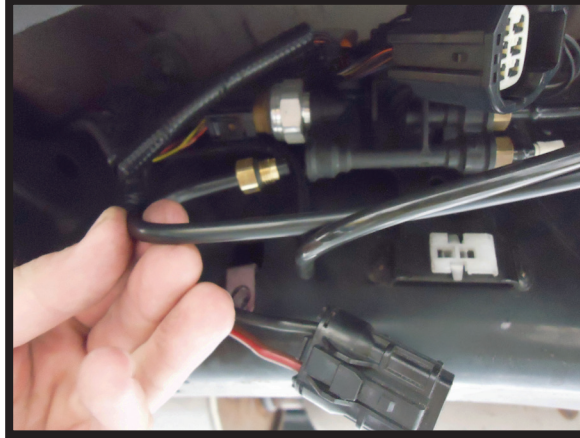


FIGURE 10-19

AIR SUSPENSION COMPRESSOR INSTALLATION



Tighten all nuts and bolts to manufacturer's specifications during the installation process.

1. Install the new air fitting supplied with the kit into the distribution block, tightening to 2 NM. (FIGURES 20-1, 20-2)

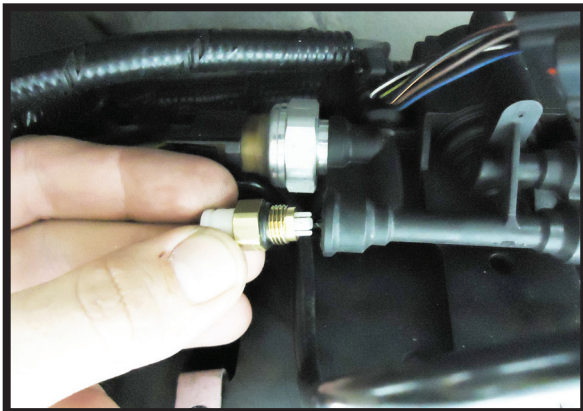


FIGURE 20-1



FIGURE 20-2

2. Install the air hose cap onto the larger air hose towards the back of the compressor mounting area. (FIGURES 20-3, 20-4)



FIGURE 20-3

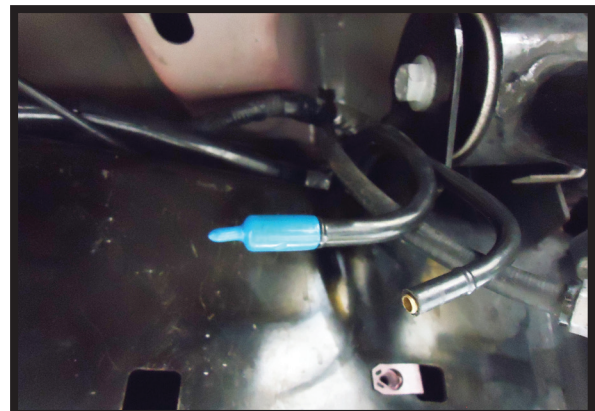


FIGURE 20-4

3. Install the new Arnett compressor/bracket assembly onto the vehicle using the factory mounting hardware. (FIGURES 20-5, 20-6, 20-7)

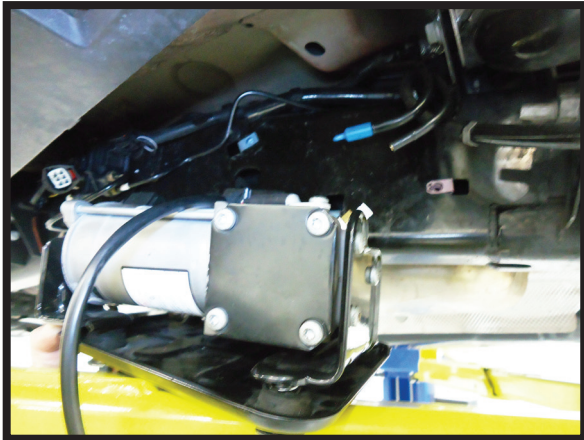


FIGURE 20-5



FIGURE 20-6



FIGURE 20-7

4. Install the intake air hose into the quick connect at the back of the compressor. (FIGURES 20-8, 20-9)



FIGURE 20-8



FIGURE 20-9

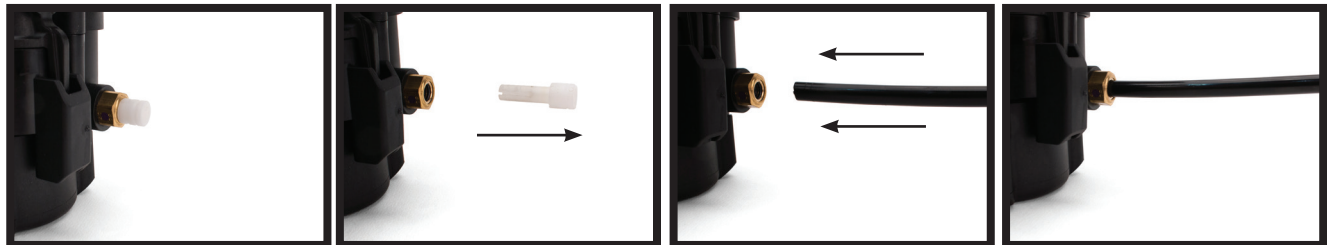
5. Remove the two (2) white shipping pins, one on the compressor, one on the distribution block, and install the new "J" shaped hose provided with the kit. (FIGURES 20-10, 20-11, 20-12, 20-13)



FIGURE 20-10



FIGURE 20-11



FIGURES 20-12



FIGURE 20-13

6. Connect the two (2) electrical plugs from the compressor to the vehicle and secure back in place. (FIGURES 20-14, 20-15, 20-16, 20-17)



FIGURE 20-14



FIGURE 20-15



FIGURE 20-16

7. Reinstall rear wheel and lower vehicle.
8. Replace the relay with the one provided in the kit. (FIGURE 20-17)

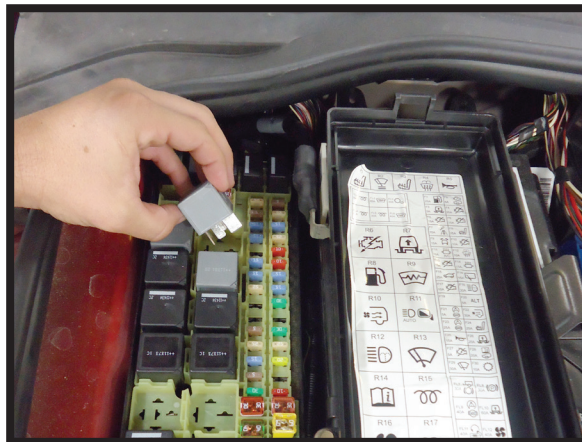


FIGURE 20-17



***Vehicle MUST be re-programmed
with AMK software by your
Land Rover dealer if replacing a
Hitachi @ compressor!***

***Failure to do so will void warranty
and may severely damage compressor.***



WARNING



CRACKED AIR SPRINGS MUST BE CHANGED TO VALIDATE THE WARRANTY ON THE COMPRESSOR

PLEASE READ ADDITIONAL WARRANTY INFORMATION ON THE BACK OF YOUR INVOICE



PROPER PROCEDURE FOR ASSESSING YOUR AIR SPRINGS CONDITION:

1. Turn off air suspension switch if equipped.
2. Refer to owner's manual for proper lifting techniques and jacking points.
3. Raise the vehicle.
4. Inspect air springs for any type of cracks or excessive wear. Cracks in air springs are evident if they are leaking. This will cause the compressor to overheat from continuous operation.

Arnott[®] is committed to the quality of its products. If you have a question or problem with any Arnott product, please contact Arnott by calling [800-251-8993](tel:800-251-8993) during normal business hours or email techassistance@arnottinc.com